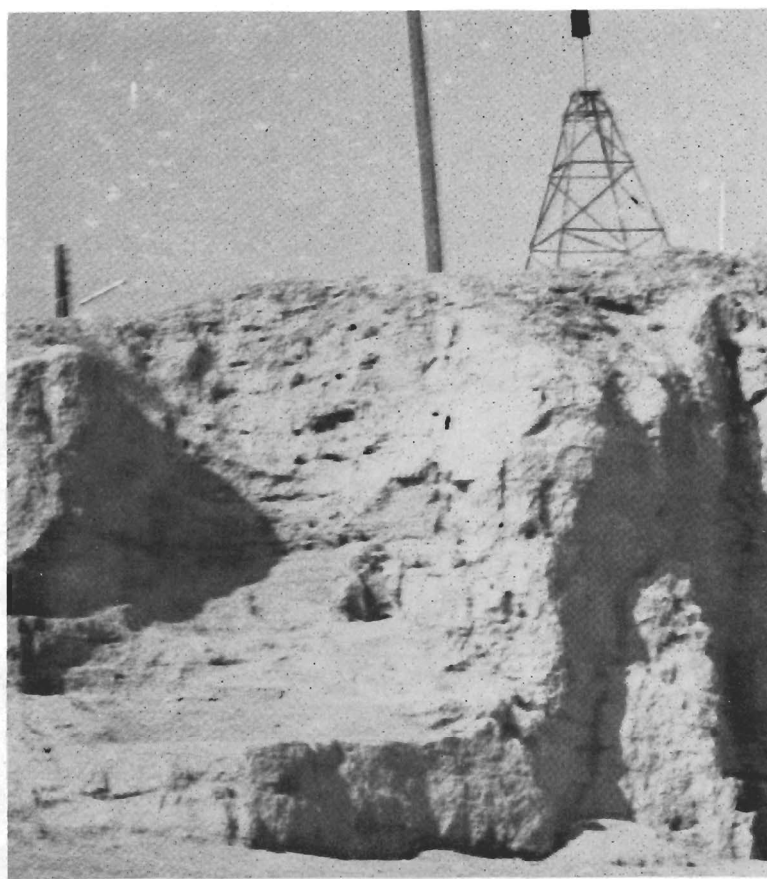


**1. Presumed Location of French Soundings**  
Looking NW from the banks of the river.

The presumed location of SG02 corresponds to a hump known locally as the Sheikh's tomb. Note also (1) the sharp projections of SG5; (2) the metal tower just above SG01 (?), which marks a Syrian triangulation point and corresponds to our Datum B; (3) the sharp escarpment on the right, with the piles of contemporary dump abutting the vertical face; (4) some abandoned houses on the edge of the cliff, and the minaret on the far right.



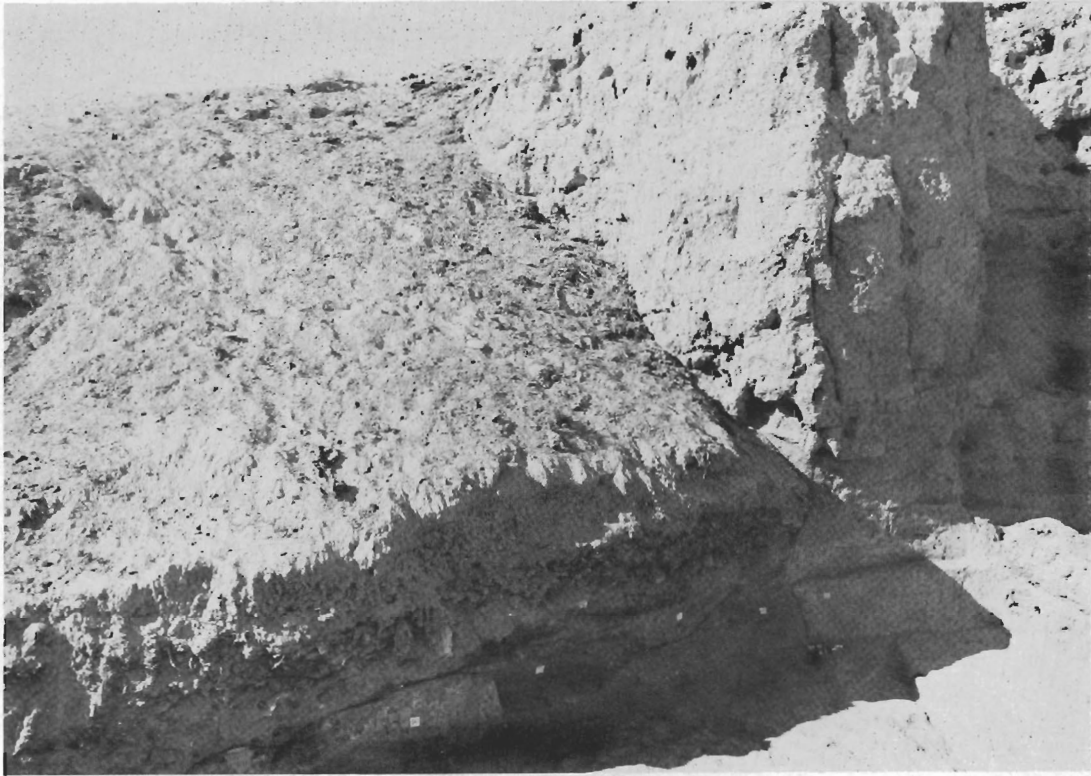
**2. Presumed Location of French Sounding Pit  
SG01 (?) Looking NW.**

Detail of semi-circular shaft which may represent what is left of the "well" ("puits") dug by Thureau-Dangin and Dhorme in 1923.



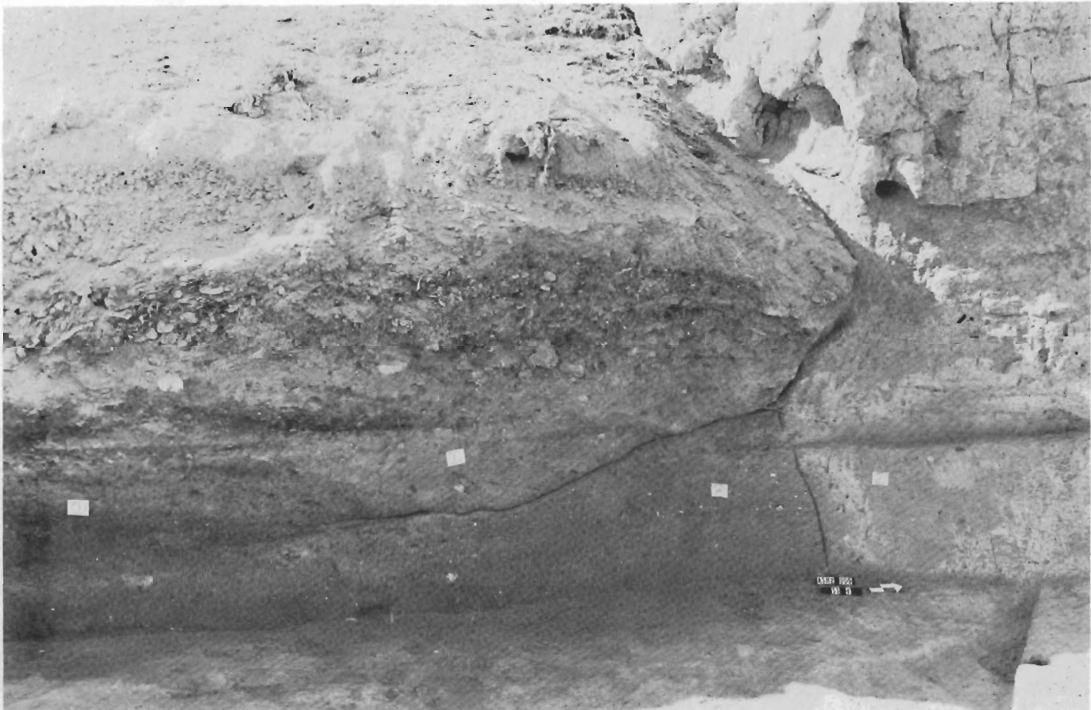
**3. Highest Point of Escarpment along Eastern Side of Mound  
Looking W from the banks of the river.**

Note steep vertical face just below minaret, and the slope of loose debris at bottom. Darker area on right is contemporary refuse.



**4. Refuse Dump  
SG5, looking NW.**

The dump, shown on the left, is contained on the right by the vertical face of what is presumed to be SG01.



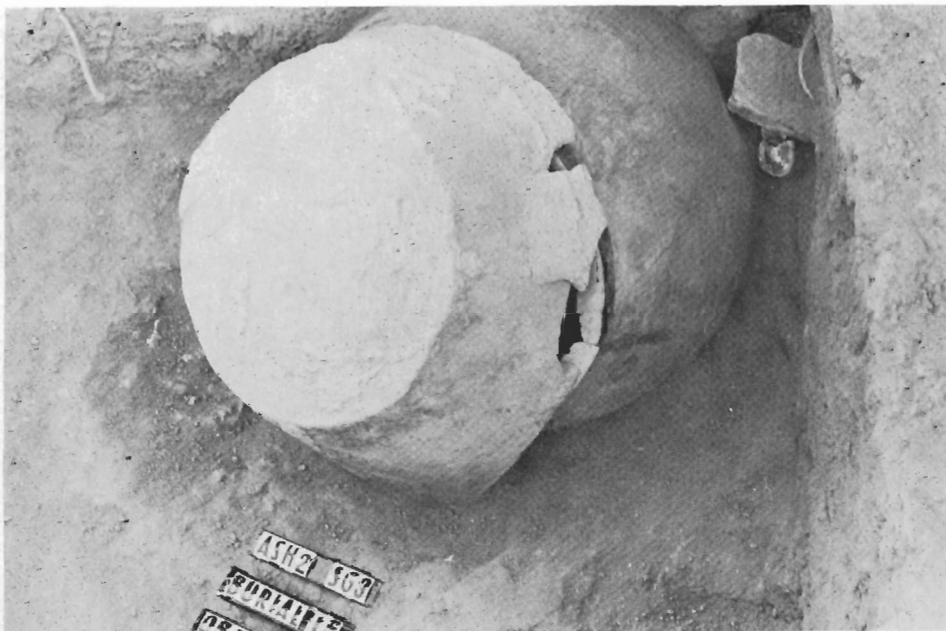
**5. Section through Refuse Dump  
SG5, Levels 1-2, looking W.**

The entire upper level consists of contemporary refuse. The lower levels shown in this picture are Level 1A and 2, and the unexcavated horizontal surface is Level 3.



**6. Pottery Glazing Kiln**  
MP3, FT1; looking S. Islamic.

View of the kiln in the direction of its long axis, after it has been completely cleared except for the tripods and fire-dogs on the bottom. Note the glaze dripping on some of these. The cut along the short axis was made by a bulldozer excavating a trench for a sewer system.



**7. Burial with Base of Vessel as Cover**

SG3, Burial 15, before removal of cover. Looking SE. Mid-second millennium.

Note bitumen decoration on rim of jar. Even though the cover was by no means air tight (as shown in photograph), the jar was completely empty except for the skeletal remains lying on the bottom.



### 8. Large Burial with Sherds as Cover

SG3, Level 11, Burial 18, before removal of cover. Looking NW. Mid-second millennium.

This is the largest burial jar uncovered to date at Terqa. It was laid on top of another burial jar, which has not been completely excavated. A clay bottle, standing by the two burials, was possibly an offering.



### 9. Floor in Burial Area

SG2, Levels 31-32. Looking S. Mid-second millennium.

In the center of the floor, a drain cuts across a shallow circular pit. To the right of the drain, just in front of the baulk, one can notice what appears to be the trace of a posthole. The irregular lines on the floor to the left of the drain are rodent runs.



### 10. Burial Cut by Later Floor

SG3, Level 9, Burial 10. Looking E. Mid-second millennium.

The triangular rope represents the plane of the bottom floor of Level 8, which sliced the upper portion of the jar. The rope in the baulk outlines a later wall.



### 11. Skeletal Remains inside Burial Jar

Inside of Burial 10 as shown in Ill. 10.

Part of the lower portion of the jar has broken away in the process of clearing away the dirt.



**12. Infant Burial Vessel**

Burial 5, SG4, FT11, Level 11. Mid-second millennium.

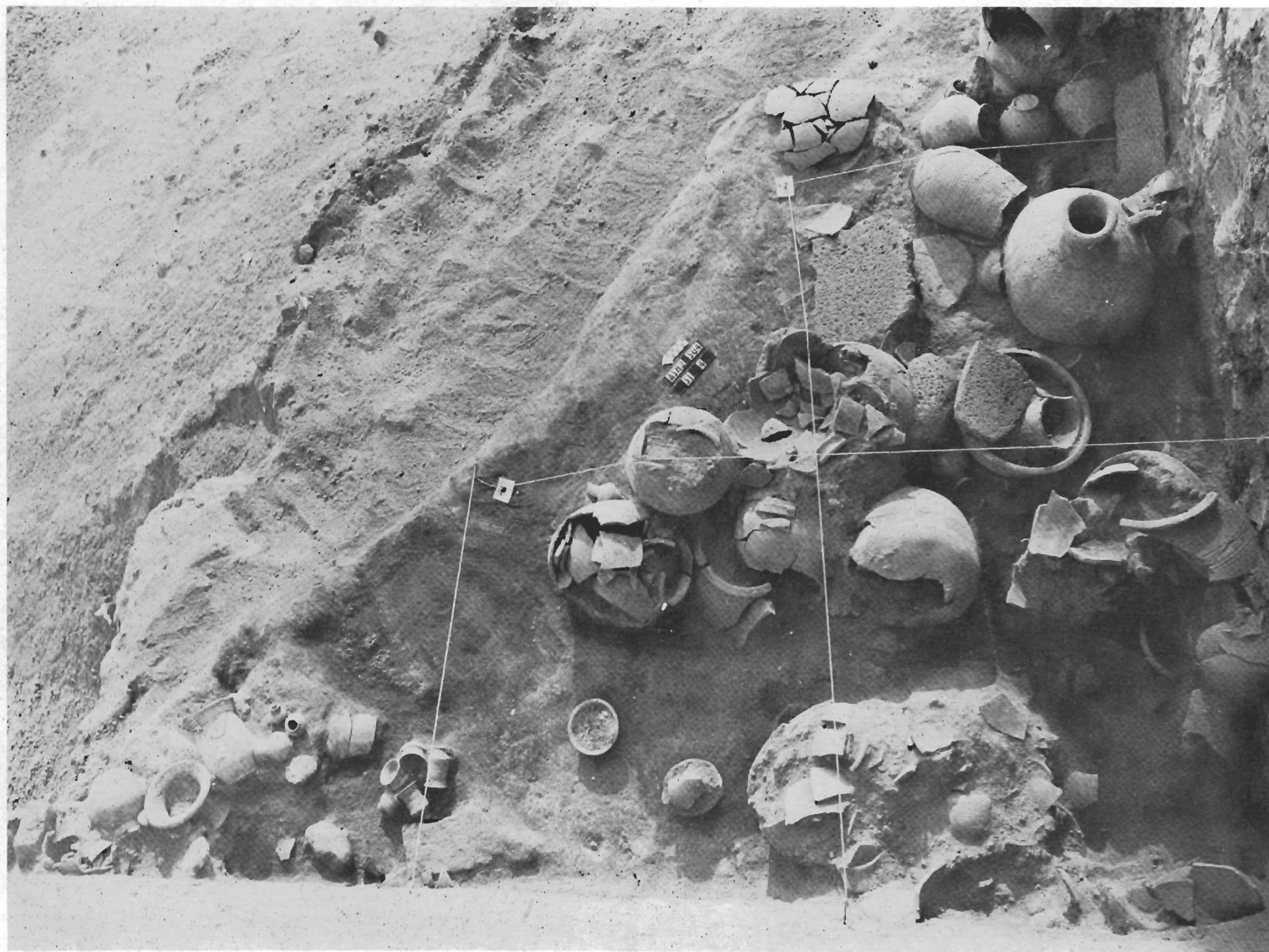
Large bowl with platter used as cover (photograph taken after the object was removed from the ground).



**13. Burial Area inside Abandoned House**

SG4, ST2, Level 12. Looking NE. Mid-second millennium.

Vessels, especially goblets, and stamp seal. The arrow points to the stamp seal, *TPR* 3 1.



#### 14. Storage Area on Living Floor of House

SG4, ST4, FT13, Level 15 from top of NE wall. First half of second millennium.

Floor corresponds to triangular portion contained by two walls. Triangle on upper left is the escarpment which drops sharply toward the river bank. Notice clusters of small goblets, with pitchers in lower left, large ovoid jars on stand (Ill. 15) at center, bowl containing cylindrical jar and fragment of grinding stone on mid-right, spheroid jar propped up by broken small bowl on upper right.





**15. Storage Jars *in situ* with Ring Stand**

SG4, FT13, ST4, Level 15. Looking W. First half of second millennium.

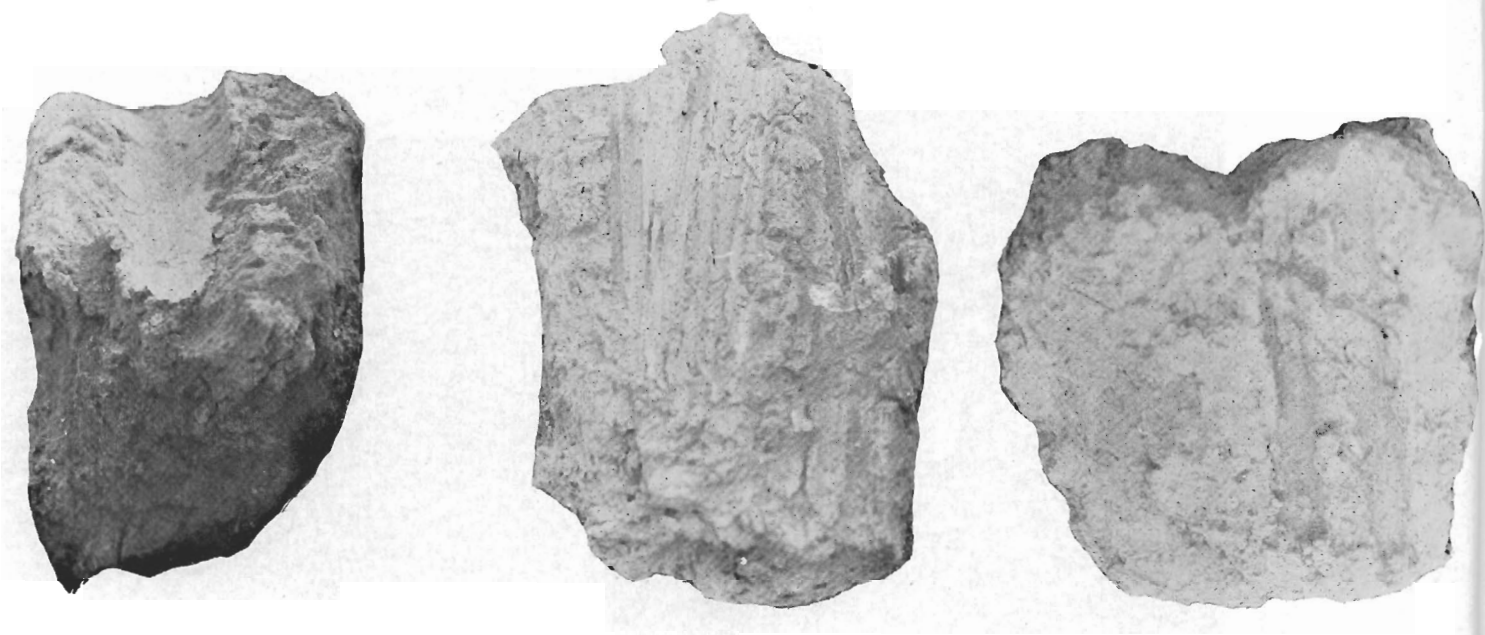
Large ovoid jar on left is supported, still almost intact, by ring stand. Jar to the right was broken by falling roof.



**16. Fallen Vessels on Floor of House**

SG4, ST4, FT13, Level 15 from top of SE wall. First half of second millennium.

Vessels on lower right were found slanted downwards, perhaps reflecting a fall from some shelf above. The small, upside-down jar marked by an arrow contained vegetal remains (seeds and possibly spices).



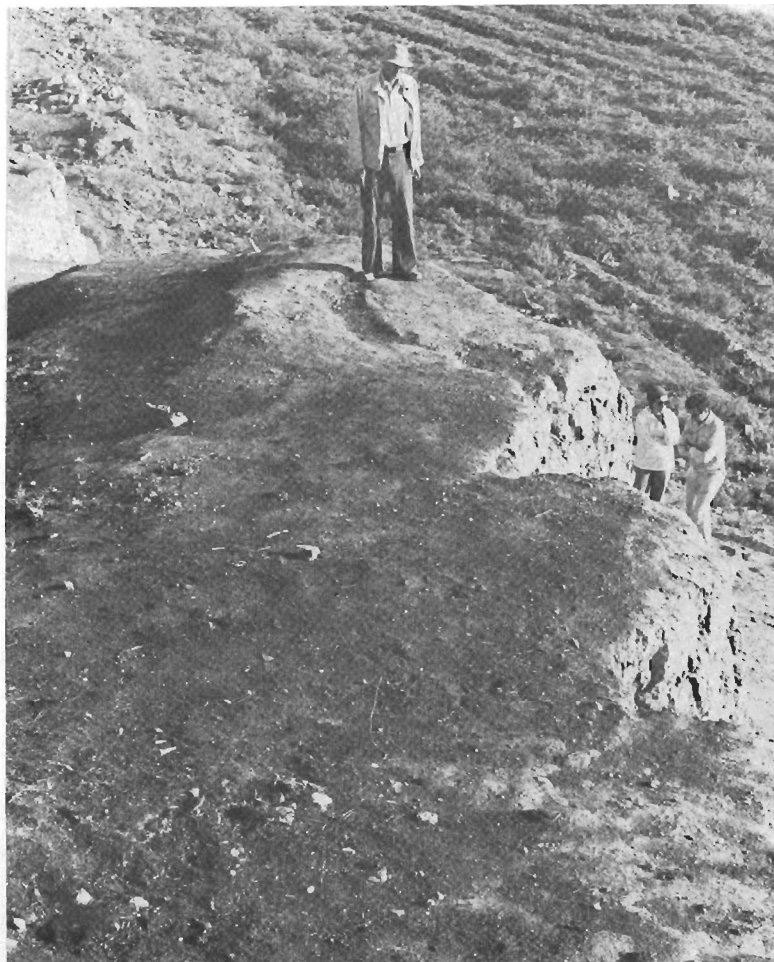
**17. Collapsed Roofing Pieces with Beam Impressions.**  
 SG4, FT13, ST4, Level 15. First half of second millennium.

Heavily burnt, found among vessels on floor. The largest beam was almost 10 cm. in diameter.



**18. Infant Burial below House Floor**  
 Burial 6 from SG4, ST4, Level 15.  
 First half of second millennium.

Burial was in corner of room, below floor of storage area (Ill. 14).



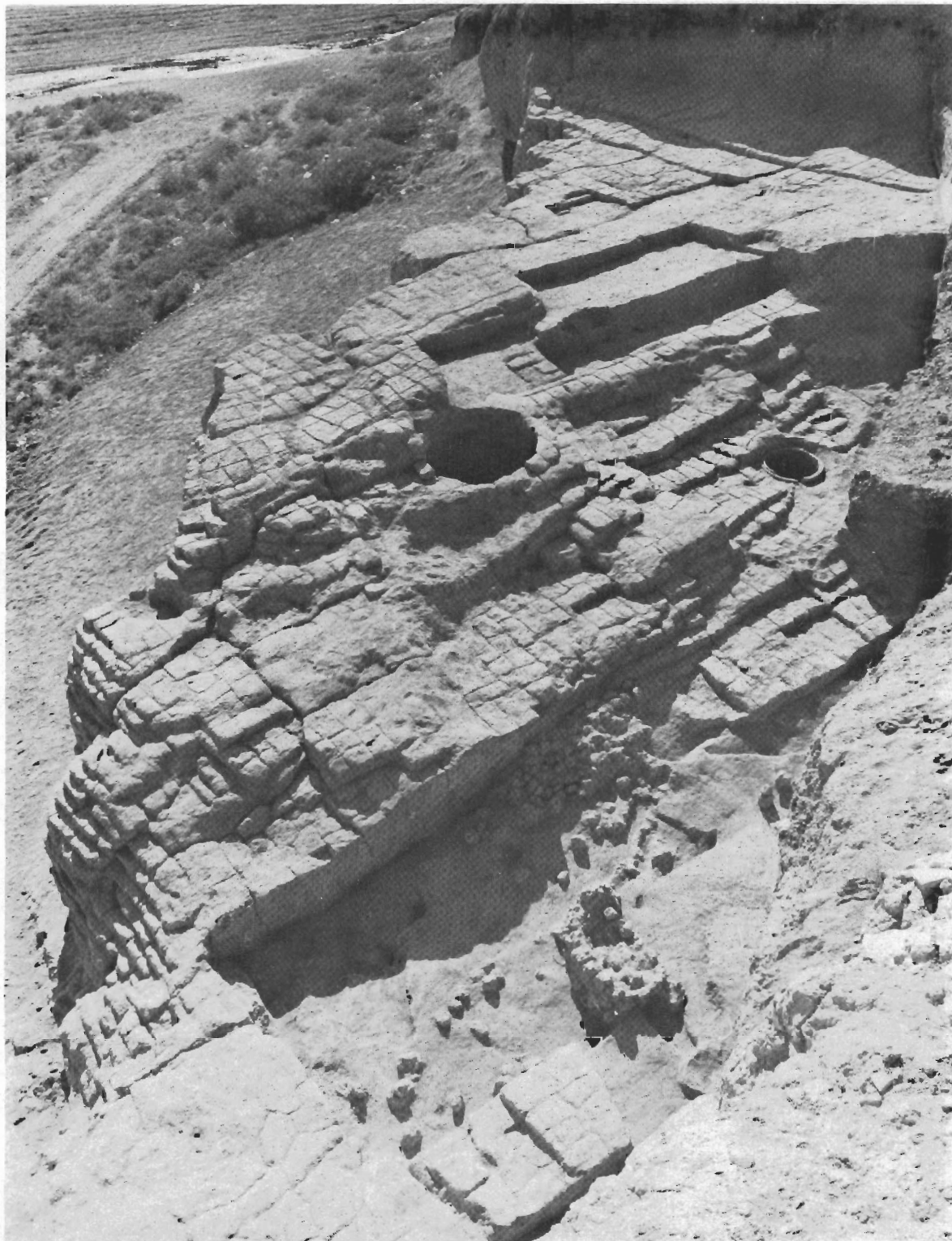
**19. Refuse Dump over Monumental Building**  
Looking N. Contemporary over third millennium.

All of the dark area on the higher level is contemporary refuse. On the lower level on the upper right one can see the small bushes which grow on the narrow flat area between the site and the river.



**20. Projections along Face of Monumental Building**  
Looking W. Mid third millennium.

Outer face of monumental brick structure after clearing. Note deep undercutting at the base of the projections on either side of the standing figure.



### 21. Monumental Structure with Inside Room

SG5. Looking S from top of SG01 (?). Mid third millennium.

Room is in lower right-hand portion, with cairns at either side of passageway, and rocks tumbled down along surface floor. Burial 1 (removed by the time picture was taken) was leaning against lower cairn. Uneven surface of brick structure does not correspond to original design. Floor in passageway not completely excavated.



**22. Room inside Monumental Building**  
Detail of Ill. 21.



**23. Detail of Brickwork of Monumental Building**  
Outside N corner of wall in SG5. Looking SE. Mid third millennium.  
Rope on the right marks the continuation of the line formed by the inner NS face of the wall.



**24. Room inside Monumental Building, with Passageway**  
SG5, ST2 (passageway), and ST1 (room), Level 5. Looking N. Mid third millennium.  
Passageway is in center foreground; on left one can see the vertical section through the refuse dump.



**25. Room inside Monumental Building**  
SG5, ST1, Level 5. Looking W. Mid third millennium.  
Rope marks inner face of main wall; rock cairn and tumbled rocks clearly visible in center.



**26. Room and Burial inside Monumental Building**

SG5, ST2 (Level 5), Burial 1 and Feature 2. Looking S. Mid third millennium.

Position of skeleton (removed in this picture) is shown by rope outline. Vessels are in place as found (vessels of Burial 1 are above in picture, vessels of Feature 9 are below). Rope along face of wall marks inner perimeter of room. One can see well the two cairns on either side of the passageway and the rocks which have tumbled down along the sloping floor.



**27. Burial Cut into Wall of Monumental Building**

SG5, Burial 1 and Feature 9, from above looking S. Mid third millennium.

Detail of Ill. 26.



**28. Burial and Rock Cairn**  
SG5, Burial 1. Mid third millennium.

Skeleton *in situ*, with one hand touching jar on upper right. Notice two metal pins on humerus, with white ring above and black bead to the left of spout sherd.



**29. Rock Cairn with Drain**  
SG5, cairn in W corner of ST1, Level 5. Looking S. Mid third millennium.

Drain was under the upper torso of the skeleton. (Pins, ring and bead on upper right corner of cairn have been removed from Burial 1).